

Contents

- 1. Executive Summary 2**
- 2. INTRODUCTION..... 3**
 - 2.1 What is a Local Place Plan?.....3
 - 2.2 Why do a Local Place Plan?.....4
 - 2.3 How do Local Place Plans fit with other plans and policies?4
- 3. Our Place 5**
 - 3.1 Where We Are.....5
 - 3.2 Who We Are7
 - 3.3 Key Facts8
 - 3.4 Scottish Index Multiple Deprivation Rank 20208
- 4. What We Did 11**
- 5. What People Told Us 13**
 - 5.1 Movement 13
 - 5.2 Accessibility 13
 - 5.3 Streets and Spaces 14
 - 5.4 Resources 14
 - 5.5 Identity 15
 - 5.6 Oversight 16
 - 5.7 What did the young people say? 16
- 6. Priority Actions 18**
 - Priority 1 – Thriving Spaces: History, Heritage, and Nature 18
 - Priority 2 – Thriving Together: Community Engagement and Wellbeing 22
 - Priority 3 - Thriving Places: Accessibility and Upkeep 25
- 7. Making it Happen 31**
 - 7.1 Updating the Plan 31
 - 7.2 Getting Involved 31
 - 7.3 How Do We Achieve This 31

1. EXECUTIVE SUMMARY

In summary, Old Kilpatrick is a community that wishes to honour its past, cherish its natural spaces, and foster a vibrant, dynamic environment where residents can thrive for generations to come. It's a place where history, heritage, and nature come together to create a truly thriving, unique and inspiring community.

The people of Old Kilpatrick have been engaged and honest throughout this process. We are passionate about making this an even better place for everyone—regardless of circumstances or backgrounds—to live, work, play, and visit. The Community Council wishes to thank the organisations and individuals who contributed their time, thoughts, and ideas to develop and produce this Local Place Plan.

The process of place planning has been a positive, collaborative experience where our community has thoughtfully considered the nature of our place, how to invest in what we value, and how to address the issues that concern us. Old Kilpatrick is a great place to live, and local people have united around a shared vision of the kind of community we aspire to be.

Importantly, this has not been a negative list of problems to fix. Instead, we have a clear idea of what is great about Old Kilpatrick and how we can build on these strengths to address our challenges, where they exist. We are a proactive place located in an area of natural beauty and historical significance.

We now have a collective understanding of the opportunities that community-led Place Planning has presented to us, and we eagerly anticipate its implementation in the coming months and years. The Community Council will actively work with all local groups and stakeholders to ensure that this vision is achieved.

2. INTRODUCTION

Old Kilpatrick Community Council (OKCC) is proud to present this Local Place Plan to West Dunbartonshire Council on behalf of the people of our community. The plan is the culmination of many months of collaboration, consultation, listening, research and thinking.

This Local Place Plan contains our local community's vision for the OKCC area and priority actions to turn our vision into reality. The plan is rooted in our local community's aspirations, gathered through comprehensive engagement activities conducted during 2024 when we ensured that local people have had the opportunity to consider and articulate what initiatives they want to see in our community. We have reached people of all ages and backgrounds to make sure their voices are heard, and we are confident that the projects and recommendations in this Local Place Plan reflect the aspirations of the whole community. This process has been a collaborative one. We want to thank West Dunbartonshire Council who have guided and supported us, and we look forward to a close working relationship as the plan is implemented.

Old Kilpatrick Community Council (OKCC) sought to bring the community together through an engaging and dynamic consultative process designed to identify the community's priorities for improving the area and develop community-led action to realise those aspirations. The priorities identified in this Plan will form the basis of projects that a potential new Trust will take forward, in partnership with local residents, local community/voluntary groups/ statutory agencies/the private sector/ Scottish Government and West Dunbartonshire Council. There are already a wide range of groups providing services and activities locally.

2.1 What is a Local Place Plan?

The "Place Principle" was adopted by the Scottish Government and COSLA in 2018. It was initially embedded in legislation in the Planning (Scotland) Act 2019 and finally set out when the National Planning Framework 4 was enacted in February 2023. This gives communities the right to feed into the planning system with ideas and to influence policy.

Local Place Plans (LPPs) are a way for communities to achieve change in their local area. They are a tool for local communities to think about how to make their "place" better, agree priorities, and take action (often working with others) to make change happen. They are more than just a plan: they can help your communities understand what it wants to be like in the future, and for working together with the local authority and others to make positive change happen. It is intended that LPPs will stimulate and encourage debate about the future of a place, enabling communities to focus on their aspirations as well as their needs.

2.2 Why do a Local Place Plan?

- Local people are the best source of knowledge about their communities, which leads to better decision-making
- The process of working together and achieving things together creates a sense of community
- The process provides communities with the ability to shape the appearance, form and function of the places in which they live.
- LPP's can also influence the content and strategy of Local Development Plans, led by the local authority.
- Many grant-making organisations prefer or even require community involvement to have occurred before handing out financial assistance

2.3 How do Local Place Plans fit with other plans and policies?

Local Place Plans have a crucial role in creating a better, healthier, greener and more sustainable Scotland. These are government objectives, stemming from the Scottish Government's National Outcomes and explained in countless strategies, plans and policies produced by central and local government and covering everything from healthy environments to jobs and education. The important point is that they are intended to make communities a better place.

This plan is our submission to West Dunbartonshire Council to influence the shaping of its next Development Plan about what should happen in each community and where it should happen. This plan, in its preparation, has regard to the following key West Dunbartonshire Council and Scottish government publications:

- Locality plan (adopted as the Community Planning Local Outcome Improvement Plan)
- Local Development Plan¹
- National Planning Framework (NPF4)
- WDC Clydebank Waterfront Locality Plan

This plan is being led by the OKCC and has been developed in collaboration with local people representing a wide range of local interests and perspectives including OKFP, Action Old Kilpatrick, the Church of Scotland, Gavinburn Primary School, and the Community planning team at WDC. Before submission as part of the consultative process, a draft copy was submitted to relevant elected members and adjacent Community Councils for comment.

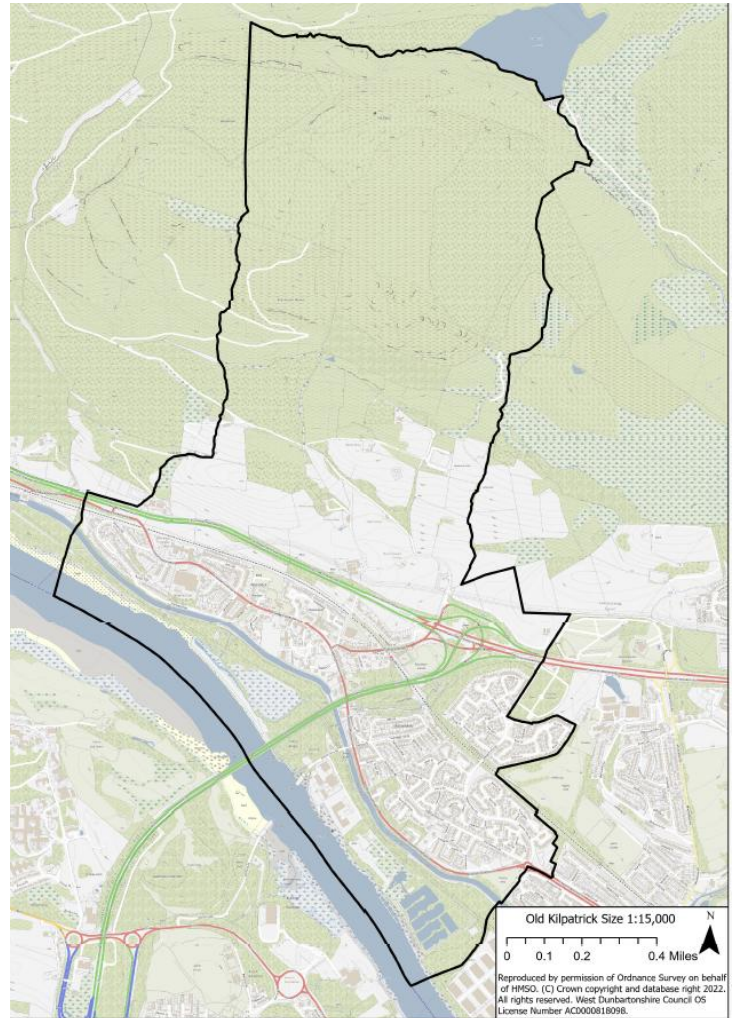
¹ The development plan for the West Dunbartonshire planning authority area consists of the Fourth National Planning Framework (NPF4) and the adopted West Dunbartonshire Local Plan (2010). The 2020 Proposed Local Development Plan is not part of the statutory development plan for the West Dunbartonshire planning authority area but is a material consideration in the determination of planning applications

3. OUR PLACE

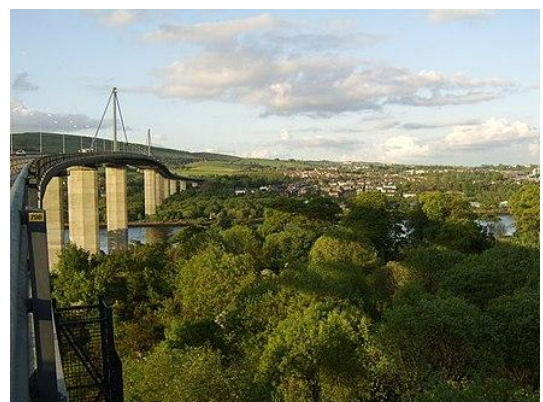
3.1 Where We Are

The maps below indicate the boundary line of this Local Place Plan.

Old Kilpatrick is a unique place, steeped in history. The name Old Kilpatrick is said to be derived from St. Patrick ostensibly being born here. It marks the western end of the Antonine Wall which the Romans built across central Scotland. A Roman fort and bathhouse (no longer visible) marked the western terminus of the Antonine Wall, constructed between 142-144AD. The Antonine Wall gained World Heritage Site status in 2008. Today, the fort is located beneath the site of the former Gavinburn Bus Depot and the houses of Gavinburn Gardens, very close to the western end of the Forth and Clyde Canal. Important finds include two sculptured distance slabs, an inscribed altar to Jupiter, and a possible bathhouse located within an annexe attached to the fort. We are surrounded by an amazing natural environment in the Kilpatrick Hills while being in very close proximity to Scotland's urban population including Clydebank and Glasgow. In the 19th century, Old Kilpatrick was described as being essentially a single street.



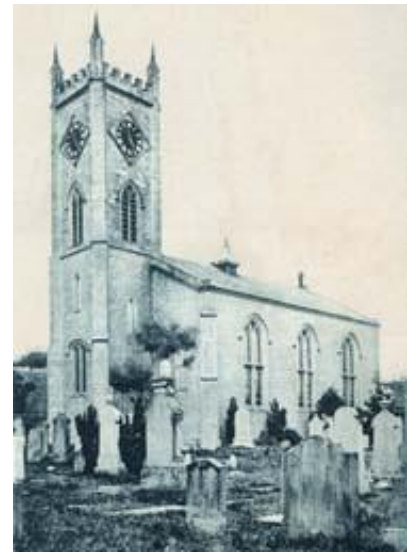
The Forth and Clyde Canal separates Old Kilpatrick from the north bank of the River Clyde, which is just a few metres beyond it to the south. The village is about three miles west of Clydebank, on the road west to Dumbarton where the river becomes the Firth of Clyde. The Great Western Road runs through the village and the modern A82 road runs to the north, between the village and the foot of Kilpatrick Hills.





Today, the north end of the Erskine Bridge, which replaced the Erskine Ferry, lands just above the village, and the village is served by Kilpatrick railway station on the North Clyde Line, with trains running to and from Glasgow twice hourly. However, trains from Glasgow, when running late, occasionally don't stop in the village.

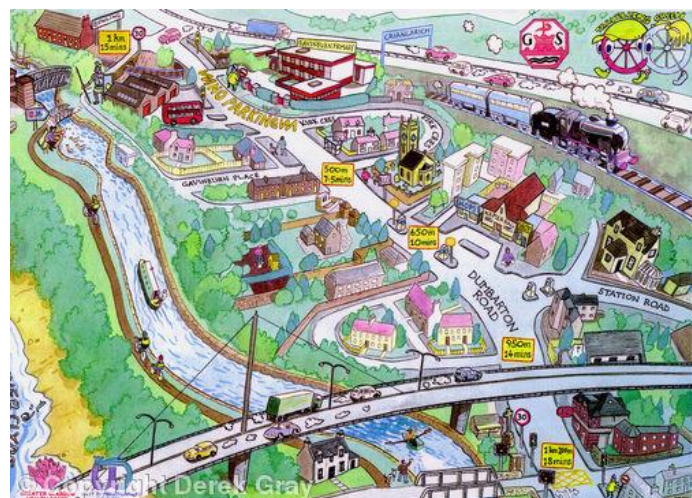
There are two churches in Old Kilpatrick; the local Roman Catholic church is St Patrick's RC Church, the current parish priest is Rev William McGinley, and the Church of Scotland Old Kilpatrick Parish Church, dating from 1812 and given listed status in 1971. This church hosts a visiting Minister monthly after it ceased the provision of weekly services in 2023, when, a Church of Scotland mission plan designated it as a category B (not required for future use and to be disposed of) and the congregation was united with Dalmuir Barclay parish. Concerns around the future of this historic and significant building remain high and have been explored during this process.



Old Kilpatrick Church c.1893

There are three public houses within Old Kilpatrick: The Twisted Thistle, The Ettrick and the Glen Lusset. The Twisted Thistle was previously known as the Telstar. After the closure of The Telstar, the building was renovated and reopened in 2014 as The Twisted Thistle.

Also at the north end of Old Kilpatrick is the local school Gavinburn Primary School which was established in 1887. The original school building was destroyed in the Blitz of 1941 and the present building was erected on the playing field of the old school and opened in 1954.



The campus also houses the Gavinburn Early Learning and Childcare Centre, a community nursery run by WDC. Today, the non-denominational school has a current roll of 165 pupils and an overall capacity of 374 (Gavinburn Primary School and ELCC - School Handbook) and the staff team of 25 FTE is led by Head Teacher, Lorna Blackhurst. The school operates a breakfast club and has an ethos of REACH:



'Reaching for the stars to be our best for ourselves, our school and our community'



3.2 Who We Are

Census data from 2011 tells us that household tenure within the Old Kilpatrick Bowling parish area is as follows, however, in line with national trends we can assume that the numbers of owned outright properties have increased meantime

Old Kilpatrick enjoys a stable and settled community, with generations of families tracing their heritage there. That said, the population has shrunk by approximately 1/5 since the turn of the century. Data from Census 201, Co-op Community Wellbeing Score and Scottish Index of Multiple Deprivation (SIMD) 2020 gives us an overview of the detail of the community, and what life is like.

Name	Council Area	Population	Population	Population	Population
		Census 2001-04-29	Census 2011-03-27	Estimate 2016-06-30	Estimate 2021-06-30
Old Kilpatrick	West Dunbartonshire	5,320	5,025	4,670	4,390

Old Kilpatrick

- **4,390** Population [2021] - Estimate
- **1.810 km²** Area
- **2,426/km²** Population Density [2021]
- 📉 **-1.2%** Annual Population Change [2016 → 2021]

3.3 Key Facts

Source Church of Scotland Parish Profile (<https://cos.churchofscotland.org.uk/church-finder/data/statistics/parish-profiles/181212.pdf>)

- There are an estimated 4,390 people living in the area (2021)
- 14% are aged under 16, Scottish average is 16%
- 67 % are aged 16-64, compared to the Scottish average of 64%
- 20% are aged 65 years and over, the same as the Scottish average
- The crime rate is almost half the Scottish average
- Life expectancy is 82 for women and 78 for men, higher than the Scottish average of 81 for women and 76 for men.

3.4 Scottish Index Multiple Deprivation Rank 2020

The Scottish Index of Multiple Deprivation (SIMD) is the Scottish Government's official tool for identifying those places in Scotland suffering from deprivation. It incorporates several different aspects of deprivation, combining them into a single index. It divides Scotland into small areas, called datazones, each containing around 760 people. The Index provides a relative ranking for each data zone, from 1 (most deprived) to 6,976 (least deprived). The Scottish Index of Multiple Deprivation 2020 data was published on the 28th January 2020. Previous data releases were also made in 2016, 2012, 2009, 2006 and 2004.

The datazones for Old Kilpatrick range from being in the lowest 32% for income and 28% for health to 94% for income in the new owner-occupied island estate to the southeast of the Erskine Bridge.

Data_Zone	Income Rank	Employment Rank	Health Rank	Education Rank	Access Rank	Crime Rank	Housing Rank
S01013172	3070	2855	2702	3704	2934	5059	2692
S01013173	3979	3681	3964	3455	2732	4276	3449
S01013174	6598	6268	5877	5700	1806	6626	6246
S01013175	5105	5027	4007	5705	1790	3489	4766
S01013176	2267	2657	2022	3249	5428	3887	1640
S01013177	4134	4498.5	3608	3131	4498	2503	1808

Map - SIMD 2020 (www.SIMD.Scot)



Population

- There is a total population of 4,306
- 13.6% of people are aged under 16, compared to the Scottish average of 16%
- 66.5% are aged 16-64, compared with the Scottish average of 64%
- 19.9% are aged 65 and over, comparable with the Scottish average of 20%
- Life expectancy in Old Kilpatrick is 82.4 for women and 78.5 for men, higher than the Scottish average of 80.7 for women and 76.5 for men

Income & Employment

- 6% of the population are reported as employment deprived, compared to the Scottish average of 9.6%
- 7% of people aged 16 or over are in fulltime education, compared to the Scottish average of 7%
- 47% of the population are in full time work, compared to the Scottish average of 40%
- 13% are in part time work, the same as the Scottish average
- 15% of the population are retired, the same as the Scottish average

Health

- 5% of residents would describe their health as bad or very bad
- 54% of residents would describe their health as very good
- 7% of residents receive up to 19 hours care every week, with 3% requiring 50 or more hours of care a week
- 9% of residents said that their day to day activities were limited a lot by their health, compared to the Scottish average of 10%

Education

- 7% of the population over the age of 16 are in full-time education
- The area has a high education domain, with 2 datazones ranking within the 9th percentile for education across Scotland, and all datazones being above at least the 5th percentile.

Housing

- 35% of houses consist of one person, and in 12% the occupant is aged 65 or over
- 26% of homes have children under the age of 18 in full-time education
- 79% of homes have access to at least one car/van
- 77% of homes are owned by the occupier
- 14% of homes are socially rented

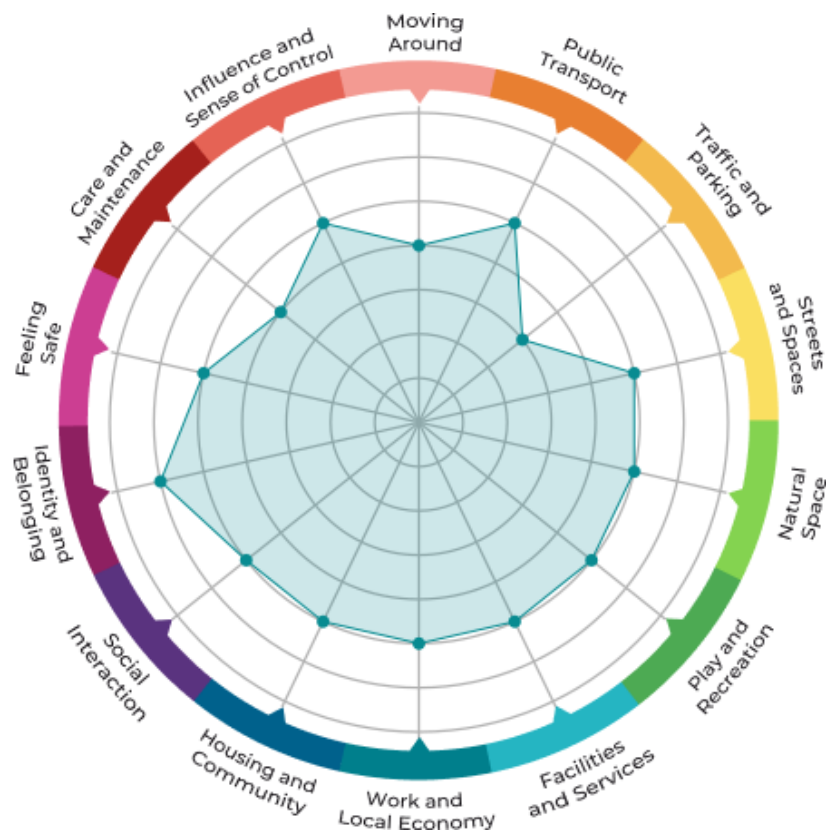
Access to Services

- On average, it is a 2.8-minute drive to the nearest GP and a 9.9-minute journey by Public Transport
- It is on average a 7-minute drive to the nearest secondary school from Old Kilpatrick
- It is also a 4.1-minute drive to the nearest retail park and a 12-minute journey on public transport

4. WHAT WE DID

OKCC secured funding through the WDC Place Based Investment Programme (PBIP) Community Grants initiative, which allowed us to commission the services of Community Links Scotland (CLS) to support us with the development of the plan.

The community consultation carried out by Community Links Scotland in support of this plan used a three-stage approach; this allowed us to draw out OKCC priority themes and issues and then explore the views of the wider community on these themes over the next two stages. In addition, we conducted a “walkabout” with a community member who uses a mobility scooter, to give us a clear idea of accessibility in the village.

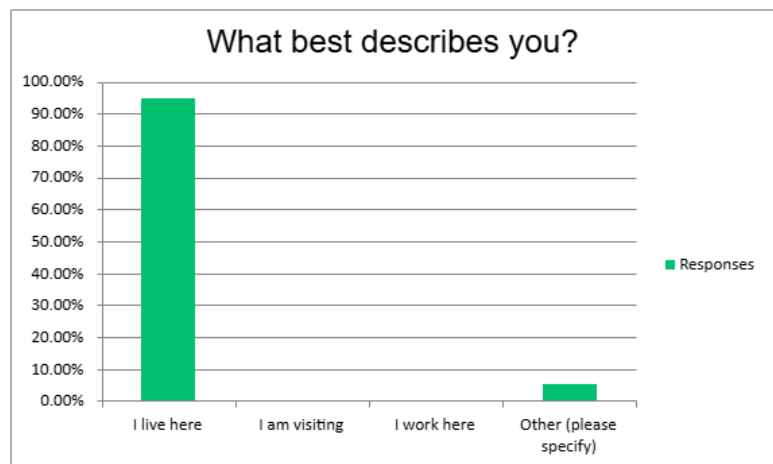


The Place Standard is a tool that is used to assess the quality of a place by providing a simple framework to structure conversations about a place. In OKCC's case, we used the full tool to help identify initial priorities for development in the area, followed by an abbreviated version in stage 1. This allowed us to identify emerging community priorities, which in turn supported the development of the stage 2 Follow-up survey.

Place Standard Tool - This was delivered as a workshop with Community Council members who, after a discussion around each aspect, identified some of the key issues affecting the area and where priorities should most likely be focused.

Stage 1 - Using the 14 Place Standard themes grouped into 5 overall headings we produced a survey that was available in paper copies that were used in street canvassing by members of the CLS team with extra copies in public places and collection in multiple locations. This was accompanied by an online version, which was distributed by QR codes in shops and on social media. Additionally, we facilitated an assembly at Gavinburn Primary and we also asked P6 and P7 pupils to respond to a survey to get their views, which can be seen further in the report.

Stage 2 – Following analysis of the responses to the Stage 1 survey, CLS developed a follow-up survey which allowed a deeper dive into the key emerging issues and priorities. This was disseminated online and via paper means and was included in a bag drop at the primary school.



In total, over 200 people shared their aspirations for Old Kilpatrick, 95% of whom live in the community.

5. WHAT PEOPLE TOLD US

From the consultation responses, detailed in the themes below, a strong vision of the future for the Old Kilpatrick community emerges. This is not a vision which just addresses challenges and gaps, but one that values and builds on the community's strengths. Our community will be welcoming and inclusive, a safe and affordable place for people of all ages and backgrounds to live, work, bring up their children and grow old with accessible services and a mutually supportive environment. We will have an accessible local environment in Lusset Glen and the Saltings with adequate lighting and a space that's safe for all.

5.1 Movement

The community of Old Kilpatrick is acutely aware of the need for various safety and accessibility improvements. Several residents have highlighted the pressing need for speed calming measures, particularly in narrow areas and near key locations like medical centres, to address the problem of speeding vehicles. Speed bumps are seen as crucial for pedestrian safety.

Concerns have also been raised about cyclists, emphasizing the importance of making pedestrians aware of their presence, especially on shared paths. Residents highlight the need for reducing speed in residential areas to enhance safety for all, given the increase in traffic and new support accommodations.

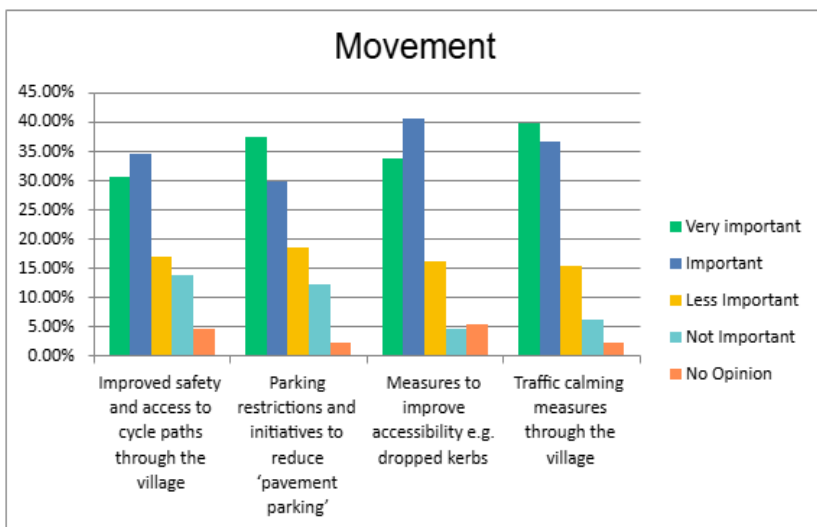
To address the issue of pavement parking, it is essential

to provide alternative parking spaces rather than simply banning it. Better pavement access is vital, and measures such as dropped kerbs and improved pavement conditions are necessary to facilitate safe movement, particularly around schools where parking issues are frequent and unresolved.

Lastly, there is a call for controlling the speed of cyclists through public spaces to ensure the safety of all users. The community's feedback underscores the importance of taking comprehensive measures to enhance safety, accessibility, and overall well-being in Old Kilpatrick.

5.2 Accessibility

Navigating Old Kilpatrick can be challenging for those using mobility scooters, wheelchairs, or prams. Issues like steps at shops, potholes in rear areas, and the lack of dropped kerbs at key spots make



movement difficult. Poorly maintained pavements, narrow walkways, and obstructive pavement parking add to these challenges.

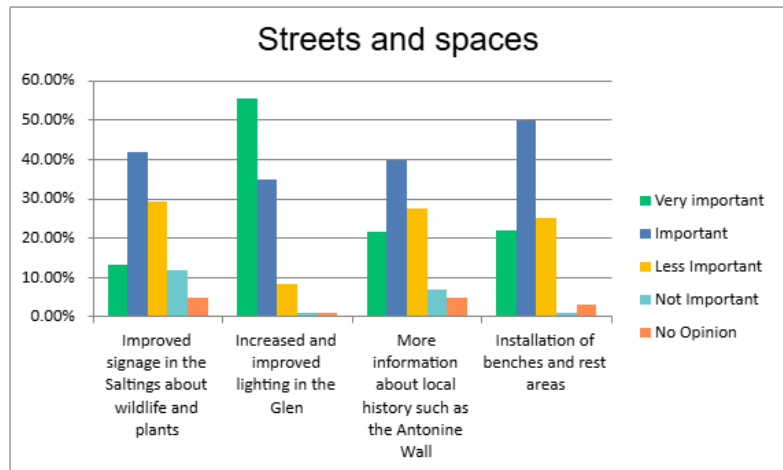
While some businesses offer side entrances, these often require advance notice, and many outdoor areas remain inaccessible. Although Napier Hall provides good accessibility, other areas fall short. The high kerbs and potholes on roads force users onto unsafe routes.

5.3 Streets and Spaces

The community of Old Kilpatrick has emphasised the need for several key improvements to enhance safety, accessibility, and community engagement. Increased and improved lighting in playgrounds and along commonly used pathways is a top priority to ensure safety and visibility.

There is also a call for more local notice boards around the village to enhance communication and community awareness. The suggestion of implementing a one-way system in certain areas aims to improve traffic flow and safety. Additionally, replacing street name signs is deemed necessary for better navigation and clarity.

The use of benches and rest areas within the village has been highlighted, with a focus on ensuring they are well-maintained and monitored to prevent vandalism and antisocial behaviour. Rest areas are important for allowing people to take breaks and feel integrated into the community space.

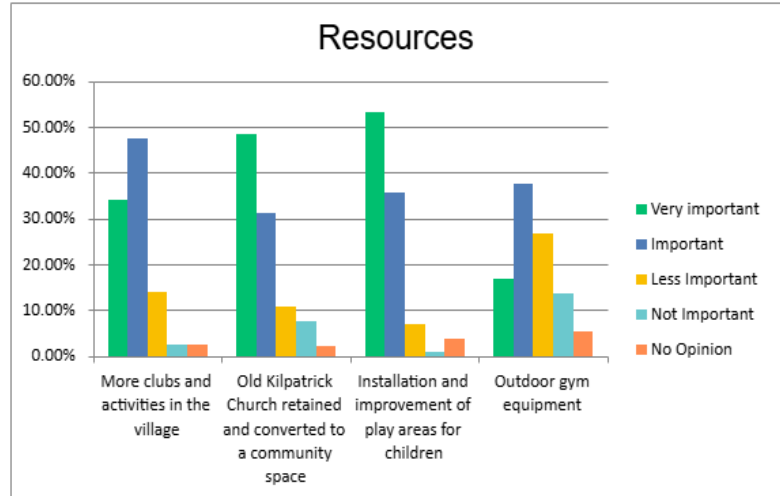


Furthermore, the community recognises the importance of cherished natural spaces that require ongoing care and informative signage to educate people about their significance. These initiatives reflect a collective effort to create a safer, more accessible, and connected environment in Old Kilpatrick.

5.4 Resources

The community of Old Kilpatrick has identified several areas for improvement to enhance accessibility, safety, and overall quality of life. Residents suggest the installation of an outdoor free gym and bicycles for public use to promote active living. Improved lighting in playgrounds and along pathways is emphasised for increased safety, particularly near frequently used areas.

There is interest in utilising existing facilities, such as the trim trail at the local primary school, to provide more recreational opportunities in safe, well-maintained areas. While there are already play parks, there is a desire to direct resources toward enhancing and diversifying the activities available in these spaces as well as creating new spaces.



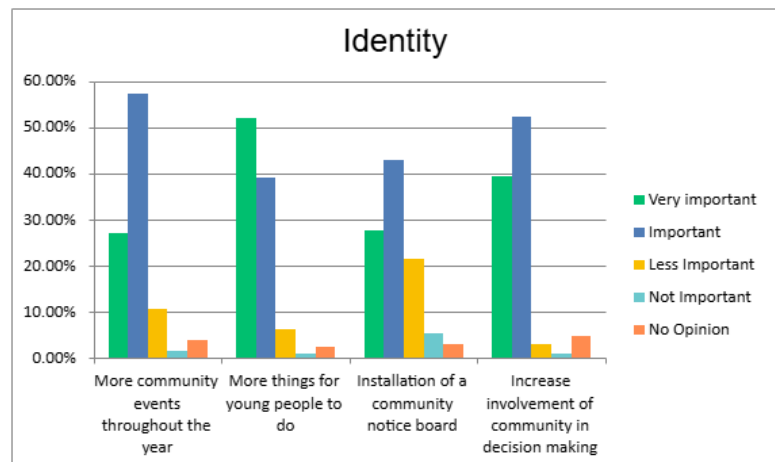
Following the changes in tenure and use at Napier Hall, some parts of the community have noted the absence of a true community space available for public hire, however, others feel the changes have brought new opportunities to the village. That said, there are suggestions to convert existing structures, like the church, into community hubs, with a focus on preserving the historical elements.

Improving facilities for childcare, such as before and after school care, and increasing clubs and activities for both children and adults are also priorities. These initiatives reflect the community's commitment to creating a supportive, active, and cohesive environment for all residents.

5.5 Identity

The community of Old Kilpatrick emphasises the crucial need for effective communication and inclusivity. While the school already has a noticeboard, there is a recognised need to enhance events and update dissemination through various platforms to ensure broader community engagement.

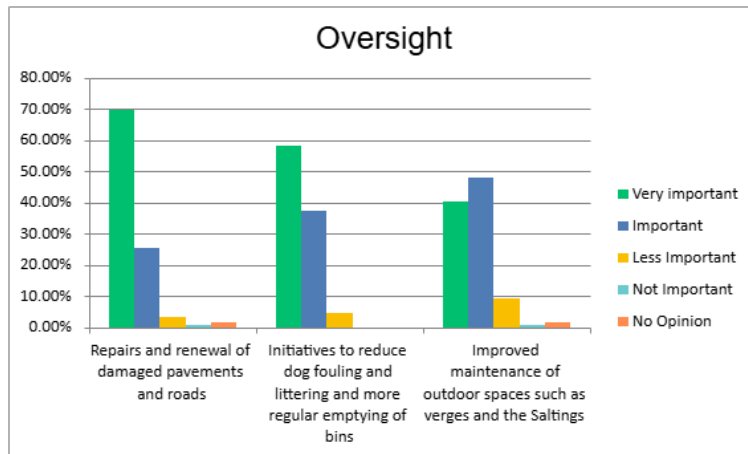
It is also essential to include all areas within the community council's activities, such as the Western Isles estate. Publishing a newsletter that clearly outlines the areas covered by the community council would help foster a sense of belonging and ensure that everyone is informed and included in community initiatives.



Local residents have expressed a desire for more opportunities to participate in local decision-making, as well as an increase in community events throughout the year. This feedback underscores the community's commitment to creating a cohesive, informed, and actively engaged environments for all.

5.6 Oversight

Litter and dog fouling remain significant challenges in Old Kilpatrick, according to community feedback, despite regular litter picks and daily bin emptying. The dog fouling issue is especially problematic in areas frequently accessed for outdoor activities, leading to unsightly and unhygienic streets. Stronger incentives for proper disposal are needed to address this recurring problem.



There is a recognised need to engage the community to foster pride and care for the environment we live in. Poor ground maintenance from the council exacerbates these issues, although volunteers play a crucial role in keeping the village clean and tidy.

Additionally, community feedback highlights the need for repairs and

renewal of damaged pavements and roads, as well as improved maintenance of outdoor spaces such as verges throughout the village, and the Saltings. There are concerns about the environmental damage caused by waste collection vehicles.

Creative solutions, such as involving children in creating posters to deter dog fouling, especially around schools, could be effective. Addressing these concerns through community involvement and improved maintenance will help create a cleaner, more pleasant environment for all residents.

5.7 What did the young people say?

Community Links Scotland facilitated an assembly at Gavinburn Primary and also asked P6 and P7 pupils to respond to a survey to get their views, which are highlighted below.

Gavinburn School Survey	Very Important	important	Not Important
Improved walking paths and pavements around the village	58%	39%	3%
Slow down traffic in the village	69%	21%	10%
More things for young people to do	79%	21%	0%
Old Kilpatrick Church changed to a Community Space	33%	42%	25%
More clubs and activities in the village	61%	39%	0%
More information about local history such as the Antonine wall	51%	39%	10%
More bins around the village	73%	21%	6%
More lighting in the Glen	64%	30%	6%

More play areas for young people	58%	42%	0%
More signs in the Saltings about wildlife and plants	52%	42%	6%

The pupils of Gavinburn Primary clearly prioritise the enhancement of recreational opportunities and safety measures, particularly in traffic management and public amenities. Their call for more bins and better lighting reflects a desire for a cleaner and safer environment. While historical information and community space conversion are seen as less critical, they still hold some interest. Overall, the results suggest a strong push for initiatives that foster youth engagement and improve community safety.

Adding more bins and improving lighting in the Glen are important steps to enhance the area. Pupils also desire more play areas for young people and informative signs in the Saltings about wildlife and plants.

More links between different community groups. Also links with the local school community, such as a history group, engaging locals in talks/events within the school and wider environment of Old Kilpatrick/Bowling.



6. PRIORITY ACTIONS

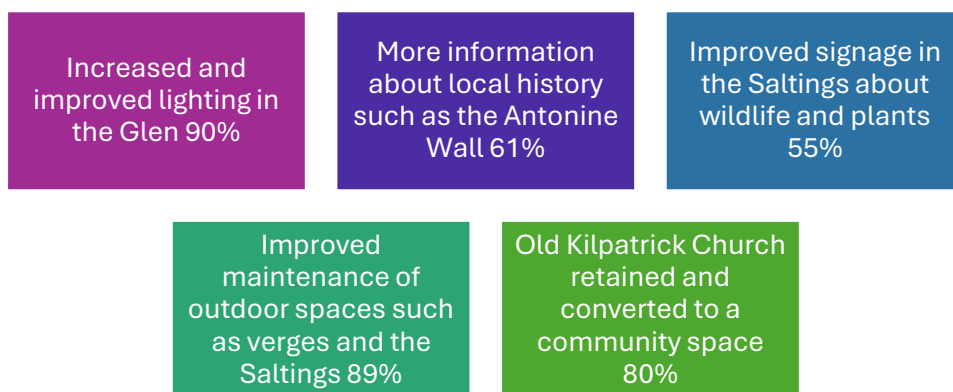
This section of the plan contains priority areas, each with aspirations and actions. These areas directly reflect the concerns and aspirations expressed in the community survey:

Priority 1 – Thriving Spaces: History, Heritage, and Nature

Aspiration

As a community, we aim to enhance the safety, accessibility, and historical appreciation of our area, creating a well-maintained environment for all residents to enjoy.

The residents of Old Kilpatrick strongly support several key improvements and initiatives. There is a clear desire for improved lighting in the Glen and better maintenance of outdoor spaces like the verges and the Saltings. The idea of preserving and converting Old Kilpatrick Church into a community space has garnered significant backing. Additionally, there's interest in learning more about local history, especially regarding the Antonine Wall, and in improving signage in the Saltings to highlight wildlife and plants.



Actions and outcomes

- **Increased and improved lighting throughout Lusset Glen**
- **Increased maintenance of The Saltings and installation of information and signage about the flora and fauna**
- **Retention of Old Kilpatrick Church and the land opposite as community assets**

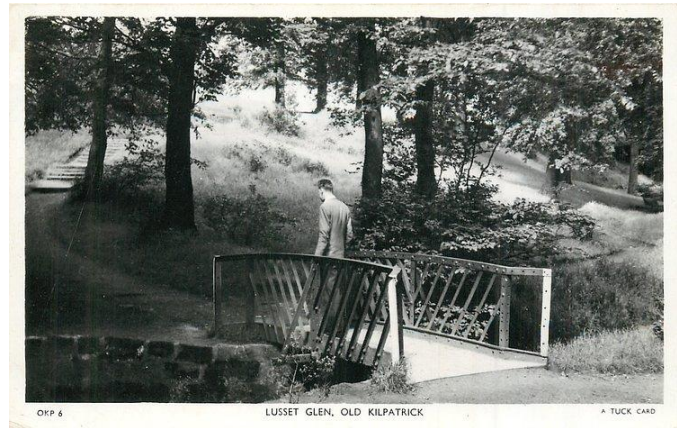
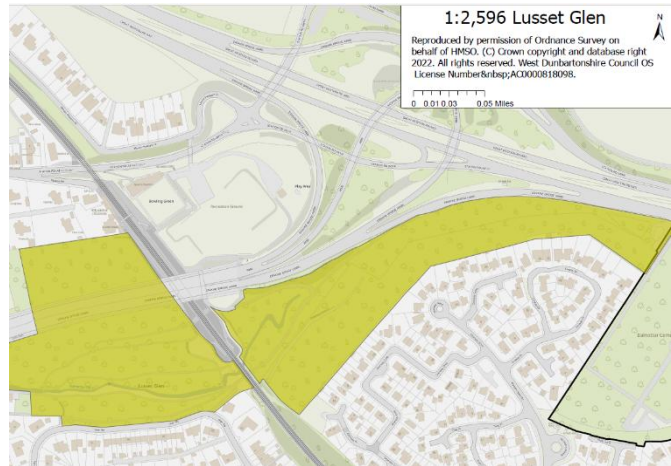
Key Players

- Old Kilpatrick Community Council
- Action Old Kilpatrick
- West Dunbartonshire Council
- Church of Scotland
- Historic Environment Scotland

Increased and improved lighting throughout Lusset Glen

Lusset Glen is a pleasant area with tall mature trees straddling the Dalnottar Burn. It stretches easterly from Dumbarton Road under the railway until reaching Great Western Road. Glen Road is almost parallel with it for the first stretch and can be used as alternative parking to that on Dumbarton Road.

Lusset Glen once housed a dam supplying water power to the Dalnottar Iron Works. The Forth and Clyde canal (opened 1790) went through the site and most of the business was transferred to the Duntocher Burn.



A new bench and sculpture have been installed in Old Kilpatrick in an effort to promote the area's Roman heritage. The aim of the initiative is to improve awareness and engagement with the site among communities along the line of the wall as well as attract visitors from across Scotland.

While the glen is well liked, the canopy of trees and bushes can make the paths to the railway station dark and feel dangerous to walkers. Lighting is not present in the central path area and a new scheme potentially combining green energy and extending the existing service is seen as a priority.

Increased maintenance of The Saltings and installation of information and signage

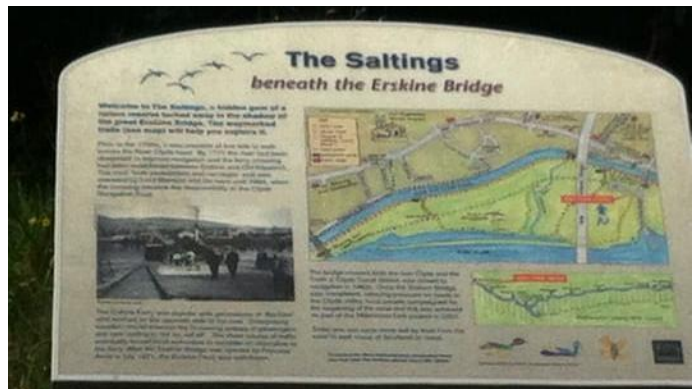
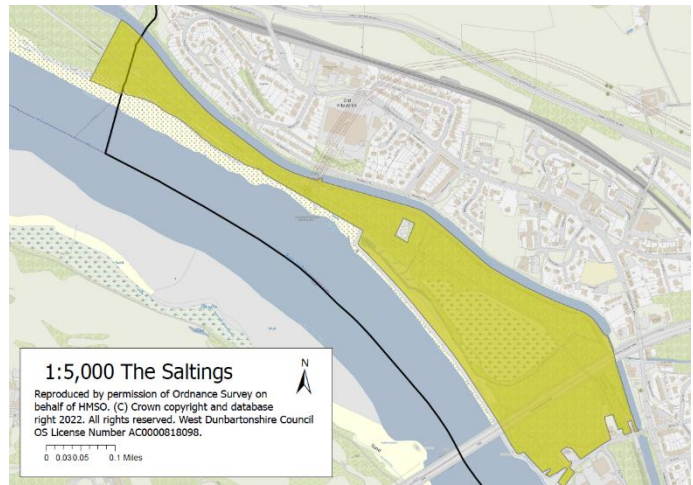
The Saltings is located near the Erskine Bridge and is bounded by the River Clyde and the Forth and Clyde Canal. It's an area around 19 hectares made up of regenerated woodland and meadow. It is noted for its wetland habitats.

The reserve is managed by West Dunbartonshire Council and offers a path network that is wheelchair friendly and has some interpretation panels which tell the history of the area and information on wildlife.

The building of the Erskine Bridge in the late 1960's changed the habitat of the Saltings. Poor quality marshy farmland was filled in with rubble to carry the foundations of the bridge. Nature recolonised the site and new habitat types have been formed and there are areas of wildflower meadow, woodland and saltmarsh.

The Saltings project would require additional maintenance of the wild areas to maintain the ecology of the area but to also ensure that visitors do not feel threatened by overgrown pathways and poor lighting. In addition it was considered that new and additional interpretation panels should be introduced.

The area is one in which community activities, volunteering projects and schoolwork are well suited, it differs markedly from the Lusst Glen in geography and ecology providing villagers with an asset that requires greater community and Council buy in.



Retention of Old Kilpatrick Church and the land opposite as community assets

The existing church may be the third to have been built on this site. The previous church on the same site was a building of some antiquity, and by the early years of the 19th century was in such a state of disrepair that the minister refused to conduct services there. The 1812 building (with additions in 1897) was designed in a semi-classical and neo-Gothic style popular in Scotland at that time.



In line with many other Church of Scotland churches across the country the old Kilpatrick Church and Church Hall have been scheduled for closure with a sale of the assets the most likely next step.



A group of interested volunteers have organised themselves to consider the best way of carrying out a Feasibility Study, Business Plan and Valuation of the building with a view to carrying out a community asset transfer.

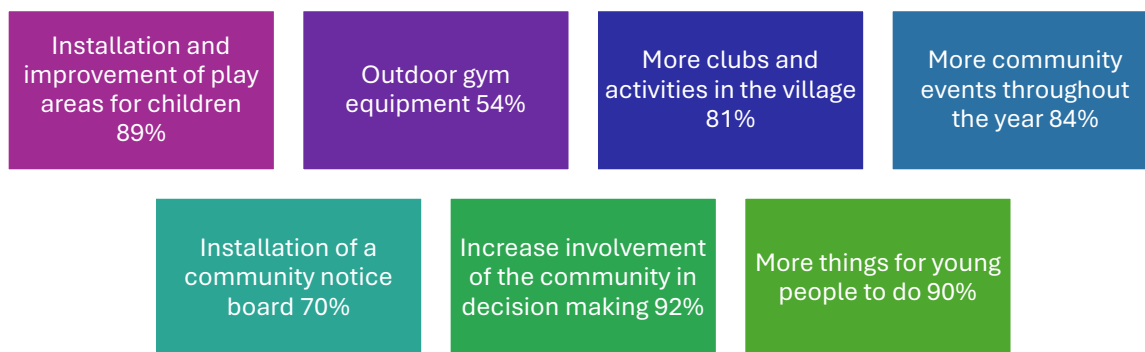
This group require ongoing support to maximise the community potential of the church building and the existing church hall and open space opposite the existing church. A variety of uses for the church have been raised including community centre/village hall, community heritage centre, and performance venue.



Priority 2 – Thriving Together: Community Engagement and Wellbeing

Aspirations

At the heart of Old Kilpatrick is a dynamic and thriving community, driven by a spirit of collaboration and mutual support. Residents actively engage in various initiatives to maintain and improve the area, creating an inclusive and welcoming environment. Old Kilpatrick is not just a place to live; it's a place to thrive, with a strong emphasis on community cohesion, well-being, and an active, engaged lifestyle. From activities for young people and older adults to inclusive community events, the shared vision is to create a place where everyone can flourish. This commitment is reflected in the community's support for enhancing local amenities and engagement, increasing community involvement in decision-making, expanding activities for young people, improving play areas, and hosting more community events throughout the year. Additionally, the introduction of more clubs and activities, a community notice board, and outdoor gym equipment are widely supported.



Actions and outcomes

- **Upgrade existing and installation of new play areas for children and young people**
- **Installation of an outdoor community gym**
- **Installation of community notice board outside shops/Napier Hall**
- **Creation of Community development Trust**
- **Increased community activities in Napier Hall**

Key Players

- Old Kilpatrick Community Council
- Action Old Kilpatrick
- OKFP
- West Dunbartonshire Council
- Antonine Wall Project
- Gavinburn Primary School

Upgrade existing and install new play areas for children and young people

The existing play parks were identified as key sites in need of upgrading. Residents wanted to see the play equipment in this park upgraded and better maintained to make it more attractive and safer for young people. Installation of new equipment was a top priority for young people, and they had many ideas about what could be introduced including wheelchair swings, climbing walls, and infant play equipment. There are limited play facilities in the village currently, meaning that some residents need to cross busy roads to get to existing provision. By creating more and better play parks in Old Kilpatrick, this would further contribute towards enhancing opportunities for local young people.



As well as upgrading and maintaining the play equipment already within the village, residents were also keen to see more play equipment in other areas of the village. The lack of multiple play parks means that many young people may have to walk quite far to play currently, which many parents may be reluctant to let them do, particularly if roads are busy. In particular the parks should provide play equipment infants; one age groups currently without age-appropriate equipment in the village.



Installation of an outdoor community gym

In addition to improvements to the play areas there was also a desire to create activity space for older residents through the introduction of a community gym. This could be placed on a new site or incorporated as part of an existing play area.



Installation of community notice board outside shops/Napier Hall

While many residents now access community information through social media, on mobiles, laptops etc. there are still significant numbers who do not use this and or wish to be a focal point for village notices, group activities, community events etc.

In front of the local shops was identified as being the best and most central location for everyone to see. This is something that the Community Council could take responsibility for.



Creation of Community Development Trust

Establish a new not for profit, charitable Trust with a membership open to residents of Old Kilpatrick to carry out a variety of activities and services for the village.

This project would be to set up a Community Development Trust for Old Kilpatrick with open membership to all people living and working in the area with the purpose of achieving a broad range of community renewal objectives for the village. As a charitable organisation (SCIO) the Trust would be managed by a local voluntary management committee drawn from this membership. The Community Place Plan would inform the Trust of the main priorities for area regeneration. The Trust would have the power to raise funds, acquire land and employ staff in order to achieve community renewal goals.

There is no community development trust for Old Kilpatrick. While there is an active Community Council, it does not have the same power over land and building acquisition and appointment of staff.



Increased community activities in Napier Hall

The former community Centre is now primarily used to host a food bank and café for residents from West Dunbartonshire. As a result, existing and new groups are either forced to use rooms in local pubs, the church hall (until closure) or locations outwith the village. Napier Hall timetable could potentially be improved to allow for increased access to the building, particularly in the evenings and at weekends.

Priority 3 - Thriving Places: Accessibility and Upkeep

Aspirations

The community of Old Kilpatrick has shown strong support for several key initiatives aimed at improving infrastructure and accessibility. There is a clear dedication to reducing dog fouling and littering, along with a commitment to more regular emptying of bins. High priority is also given to the repair and renewal of damaged pavements and roads, as well as the improved maintenance of outdoor spaces such as verges and the Saltings.

There is strong community support for measures to enhance accessibility, including the upgrade and installation of dropped kerbs. Many residents also favour the installation of benches and rest areas, parking restrictions to reduce pavement parking, and improved safety and access to cycle paths through the village.



Actions and outcomes

- **Traffic calming measures particularly on Old Dalnottar Road and Erskine View**
- **Installation of, or renewal of dropped kerbs in multiple areas (see map)**
- **Repairs to pavements**
- **Benches and seating areas**
- **Cycle paths**
- **Litter picking and dog fouling initiatives**

Key Players

- Old Kilpatrick Community Council
- Action Old Kilpatrick
- Mens Shed
- Keep Scotland Beautiful
- Cycling Scotland
- West Dunbartonshire Council
- Gavinburn Primary School

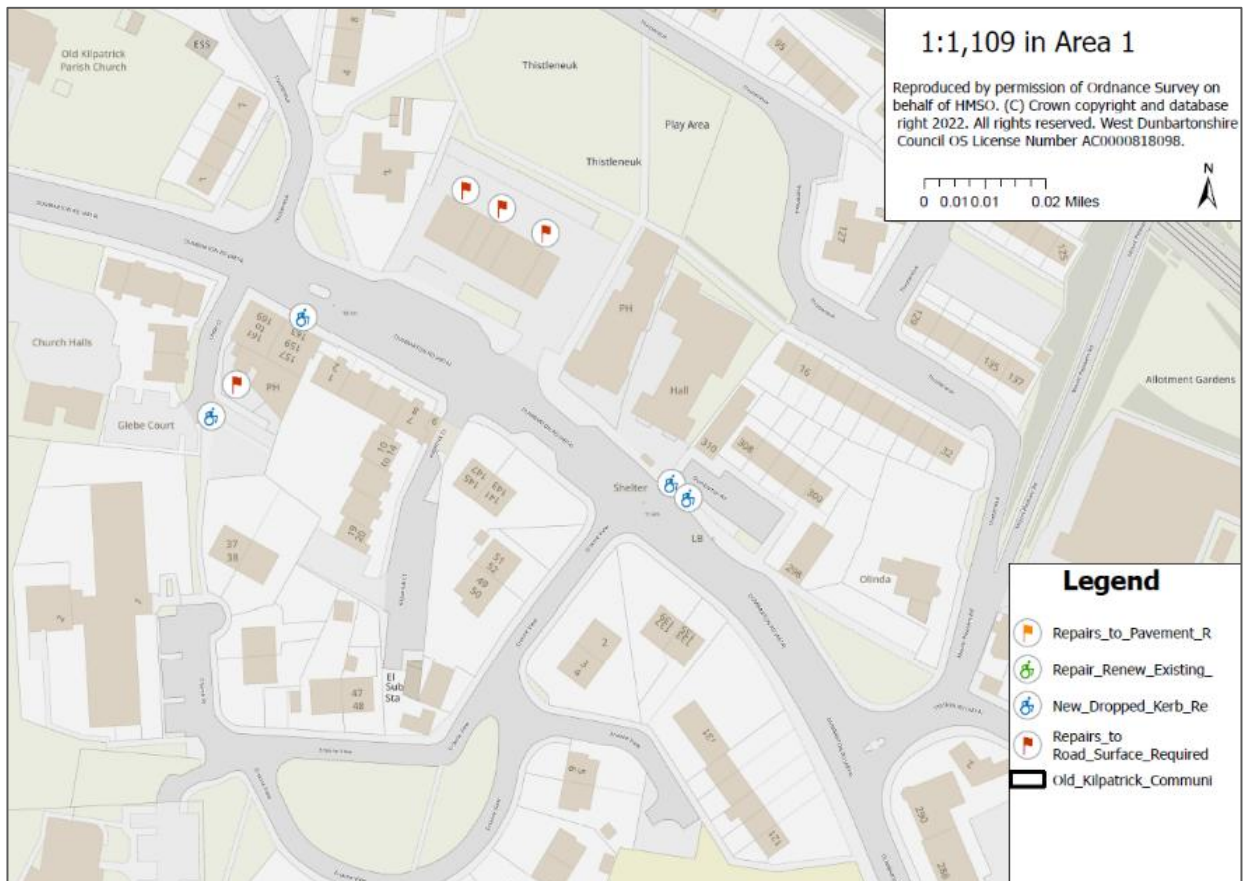
More benches / seating areas in the Saltings and the Glen would be great and encourage people to congregate.

Accessibility

Main shops (Dumbarton Rd)

- Shops on raised area have steps to enter – Key store helpful, hairdressers less so
- Area at rear of shops full of potholes and inaccessible
- Pavement outside Lightburn Pharmacy and Erskine View homes have no dropped kerbs so scooter must go long way around rather than straight up Dumbarton Rd. (

MAP 1 – Dunbarton Road; Glebe Court

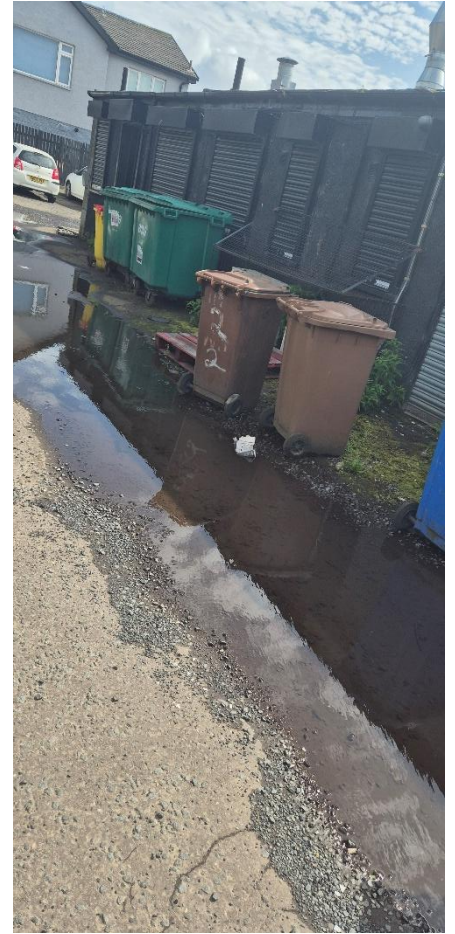




Erskine View / Pharmacy



Rear of Shops – facing north-
west



Rear of shops – facing south -
east

Ettrick Pub area

- Kerb on Dumbarton Road dropped on the east bound side of the road, and on the median, but not on the west bound side. Mobility scooter needed to leave pavement on east side, miss median altogether and travel diagonally to corner dropped kerb at Glebe Court. (pics below show lack of kerb)
- Access from Glebe Court to Church Place – not dropped kerb to path to Church Place, so need to go through Ettrick carpark, which is full of potholes and uneven [Ettrick carpark 1.jpg](#) [Ettrick carpark 2.jpg](#)



No dropped kerb access on west bound road.

Poor quality surface on only accessible route.

Pubs/restaurants

- Twisted Thistle has a side door – call ahead and they let you in. No access to outside (front) beer garden as doors have a raised lip
- Glen Lusset – side entrance – call ahead and they let you in
- Napier Hall has side ramp, accessible door pads and disabled toilets. Rena is very positive about the refurbishment.

Glen Lusset

- Deep potholes on road entrance to glen

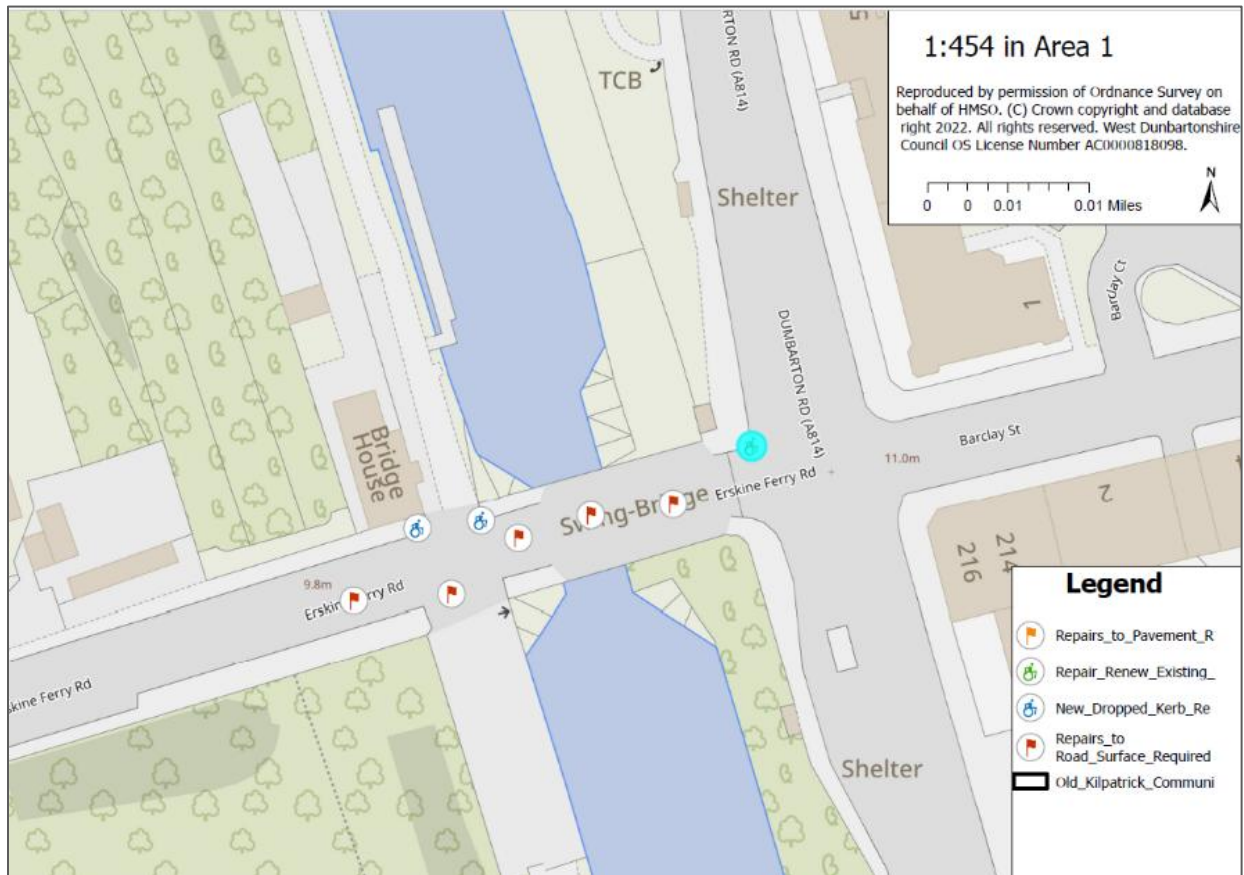
Ironworks

- Pavements on east bound Dumbarton Road ironworks are significantly raised or sunken. Very challenging for mobility scooter, pushchair or wheelchair

Erskine Ferry Road

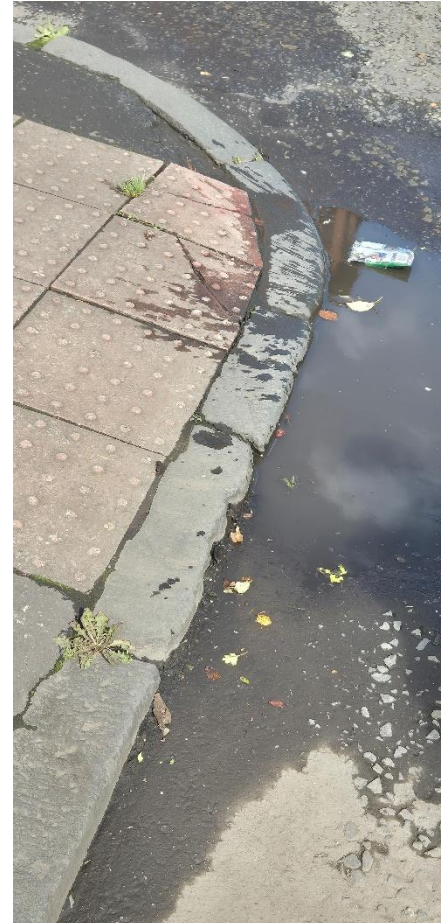
- Dropped kerb at junction with Dumbarton Road is too high for scooter to mount
- Where canal path cuts across there are no dropped kerbs
- Accessible dropped kerb is down near Wee Chatty Cafe
- Scooter user had to travel on road (full of potholes) until first dropped kerb

MAP 2 – Erskine Ferry Road





Pavement towards canal path – no dropped kerb



Crossing (with lights) at Erskine
Ferry Road

Overview

- Limited ability to spontaneously visit a pub/restaurant - need to call ahead, and unable to sit outside at Twisted Thistle
- Generally east bound pavements in poor repair, west bound are better
- Area around war memorial and Glen Lusset pub is pleasant and accessible

7. MAKING IT HAPPEN

This Community Place Plan belongs to everyone in Old Kilpatrick and we hope that the whole community will use it and be involved in taking the Plan forward to help make Old Kilpatrick a great place to live. The Old Kilpatrick Community Council wish to thank all those who have contributed their time and skills at various times throughout this process both local groups and agencies and individual residents who contributed.

7.1 Updating the Plan

A dynamic plan is essential for the ongoing development of the local community. This plan can and should be regularly updated by the community to ensure it continues to be representative of their wishes. A yearly review and update of the plan should be undertaken by the Community Council. This review and update should involve as many key stakeholders as possible, particularly those who have been involved in the delivery of any actioned activities or projects, or who would be involved in any proposed new activities or projects.

The community should also continue to be involved so that they can fully play a role in the decision-making process. Ongoing involvement of the wider community will help people to see how their demands and aspirations are being addressed and reflected through ongoing work both in terms of delivering actions and in reviewing the content of the plan.

7.2 Getting Involved

If you want to get involved in helping to progress or deliver any of the ideas and projects in this Plan, or if you have any other ideas for the future of the village, then please get in contact with Old Kilpatrick Community Council.

Old Kilpatrick Community Council meet every month and are contactable on Facebook at 'Old Kilpatrick Community Council, where you can find out more about what is happening in the village as well. Old Kilpatrick Community Council meetings are also held monthly and are open for all Old Kilpatrick residents to attend.

7.3 How Do We Achieve This

Old Kilpatrick Community Development Trust

Setting up a Community Development Trust would offer an excellent means of delivering the various actions and projects detailed within this plan, as a Community Development Trust could provide support to the Community Council and local organisations to carry out certain tasks which these organisations would not be able to, such as employing staff. The development trust would combine community-led action with an enterprising approach to address and tackle local needs and issues. The aim of the development trust would be to create social, economic and environmental renewal within Old Kilpatrick.

ACKNOWLEDGEMENTS:

This report has been produced by Community Links Scotland. We extend our sincere thanks to:

- **Members of the Old Kilpatrick Community Council, in particular, Isobel Plunkett and Catherine McKenzie**
- **West Dunbartonshire Planning Team**
- **Antonine Wall Project Team**
- **Staff and children at Gavinburn Primary School**
- **Staff and volunteers at OKFP**
- **The residents of Old Kilpatrick**

We are appreciative of the efforts and input of everyone involved.

Contact Information:

For further information or queries regarding this report, please contact:

Stephen Singer, Director – Community Links Scotland stephen@comlinks.org.uk

